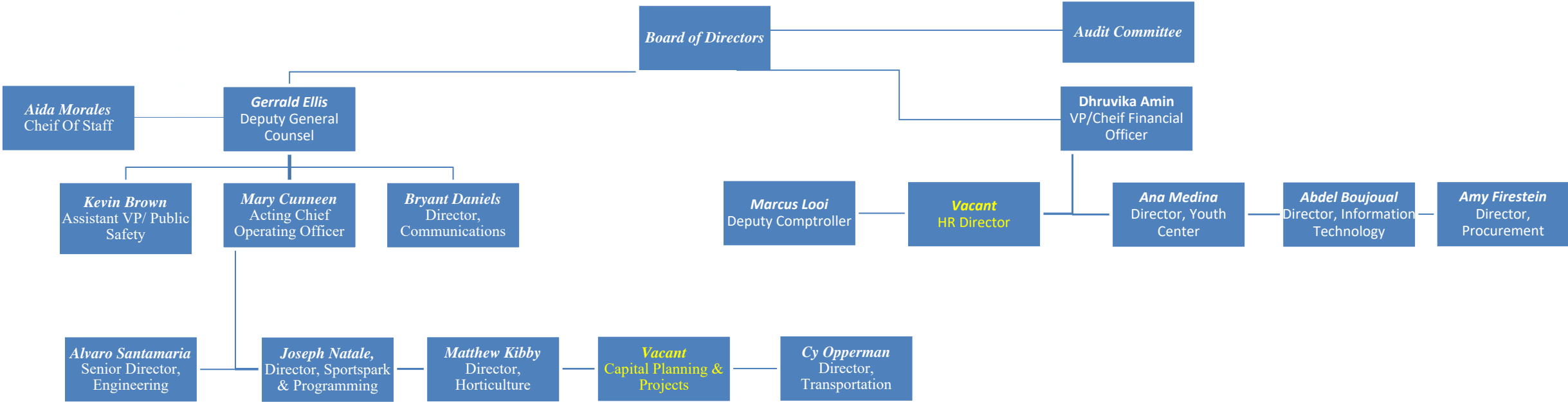
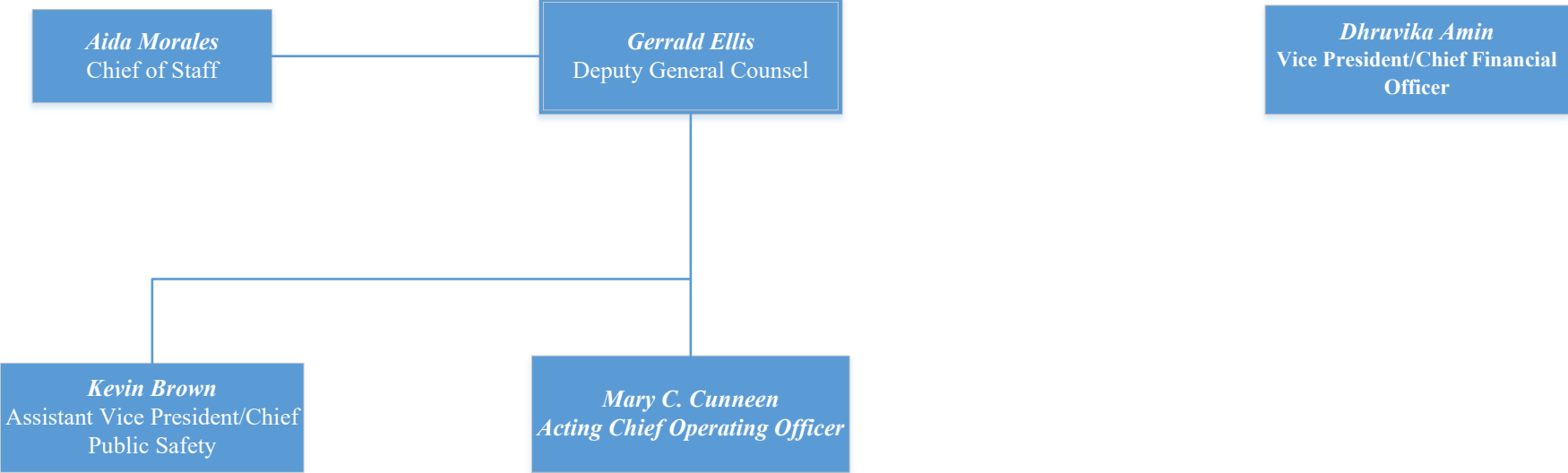


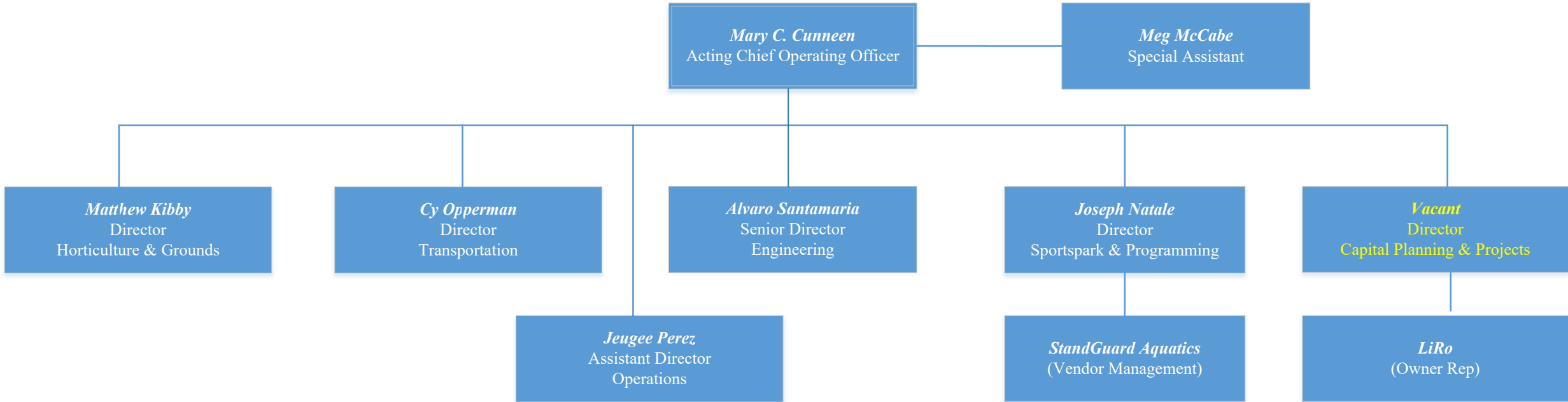
# General Overview



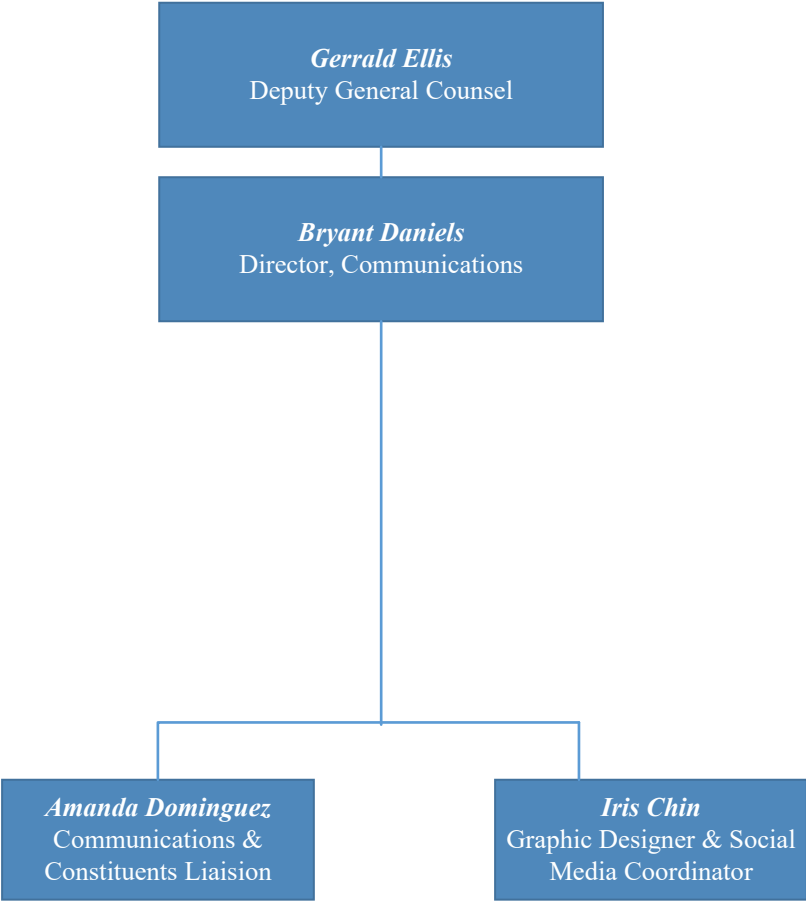




# Executive Operations



# Communications & Public Affairs





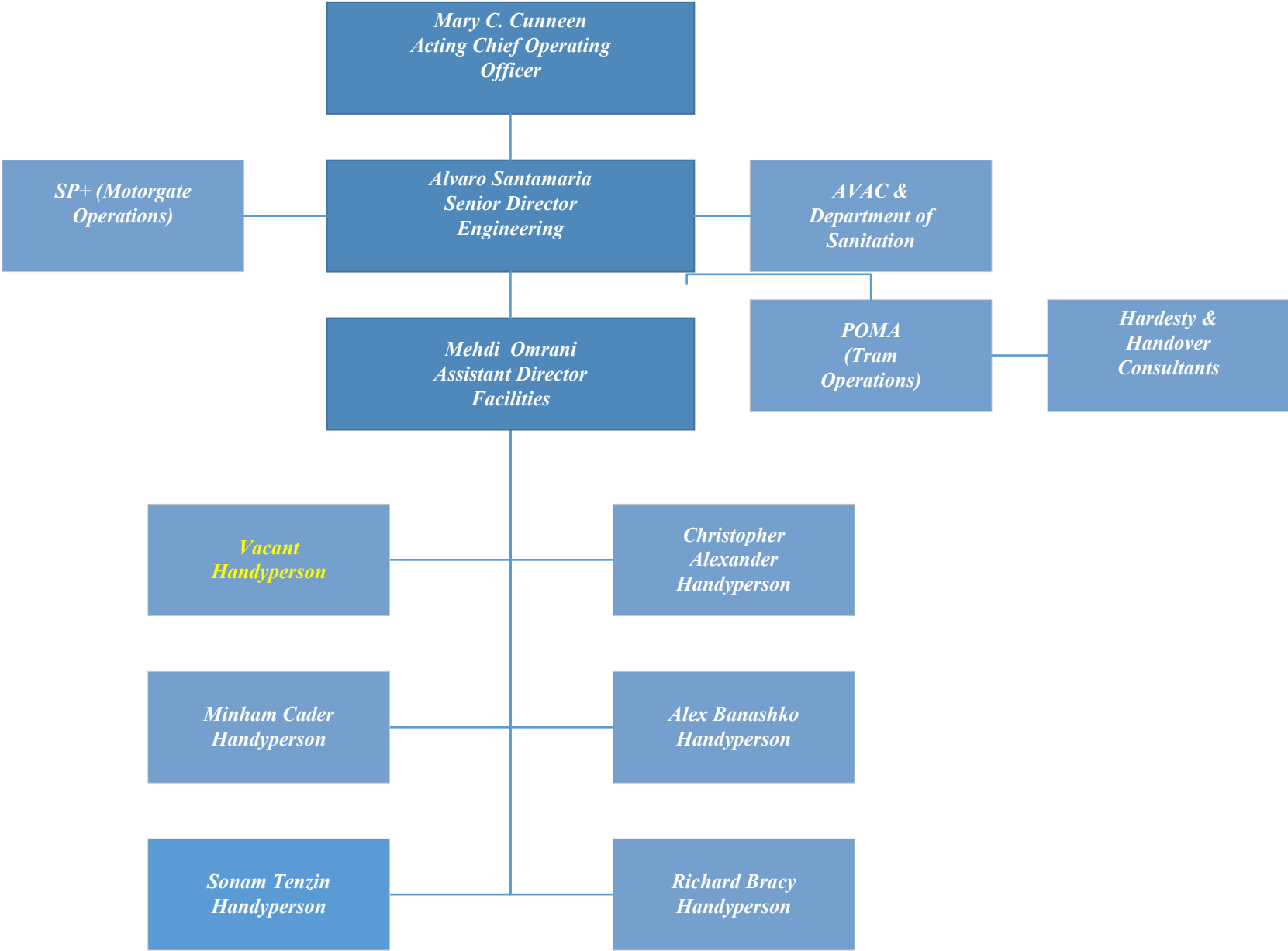
**Roosevelt Island  
Operating Corporation**

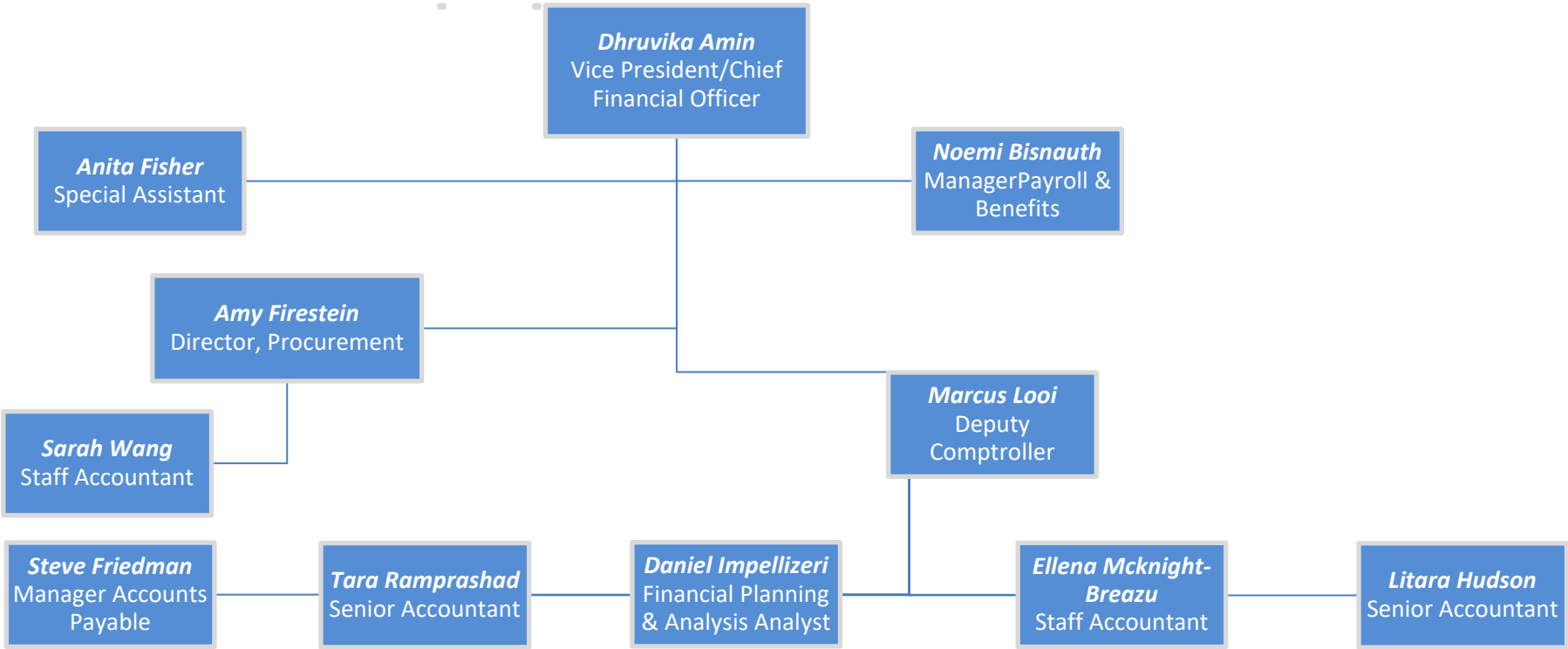
# Capital Planning & Projects

*Mary C. Cunneen*  
*Acting Chief Operating Officer*

*Vacant*  
*Director*  
*Capital Planning & Projects*

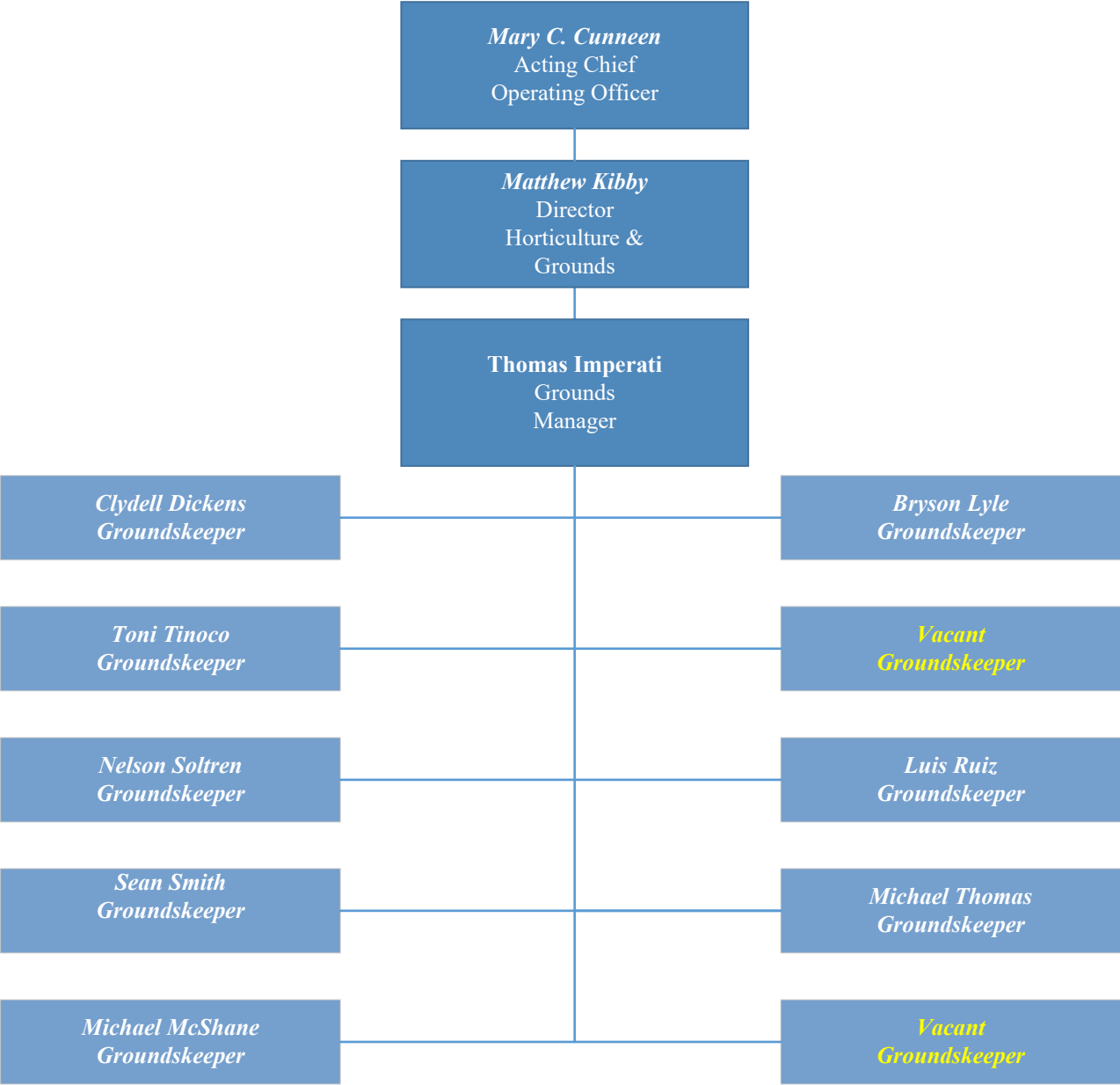
*LiRo*  
*Owner Representative*



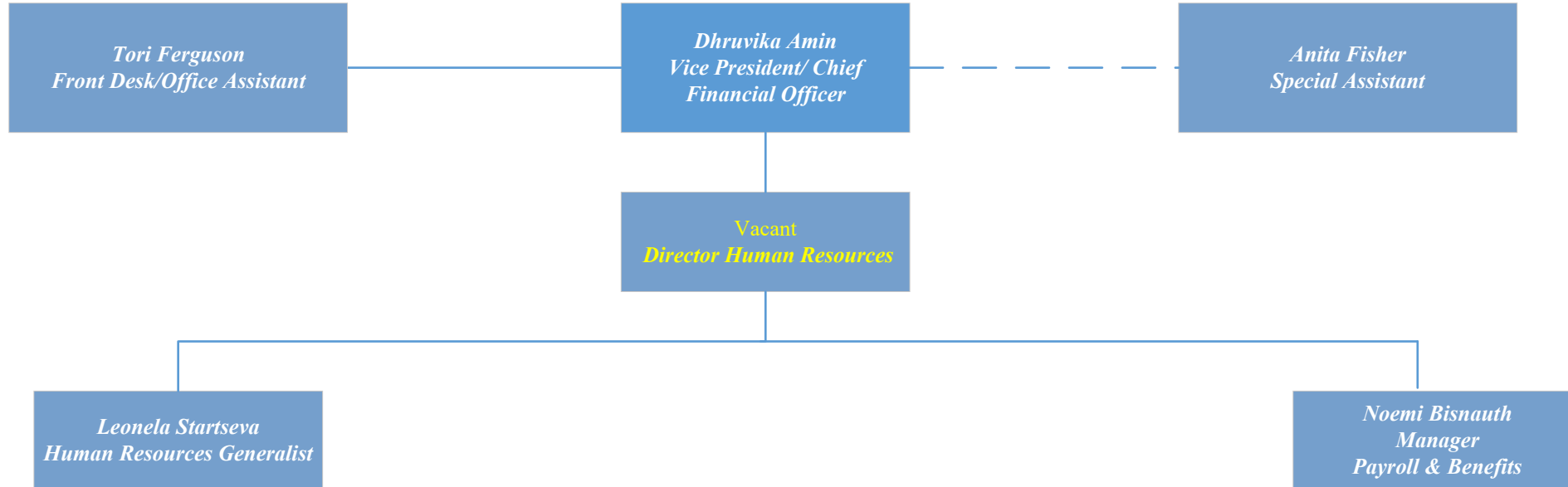


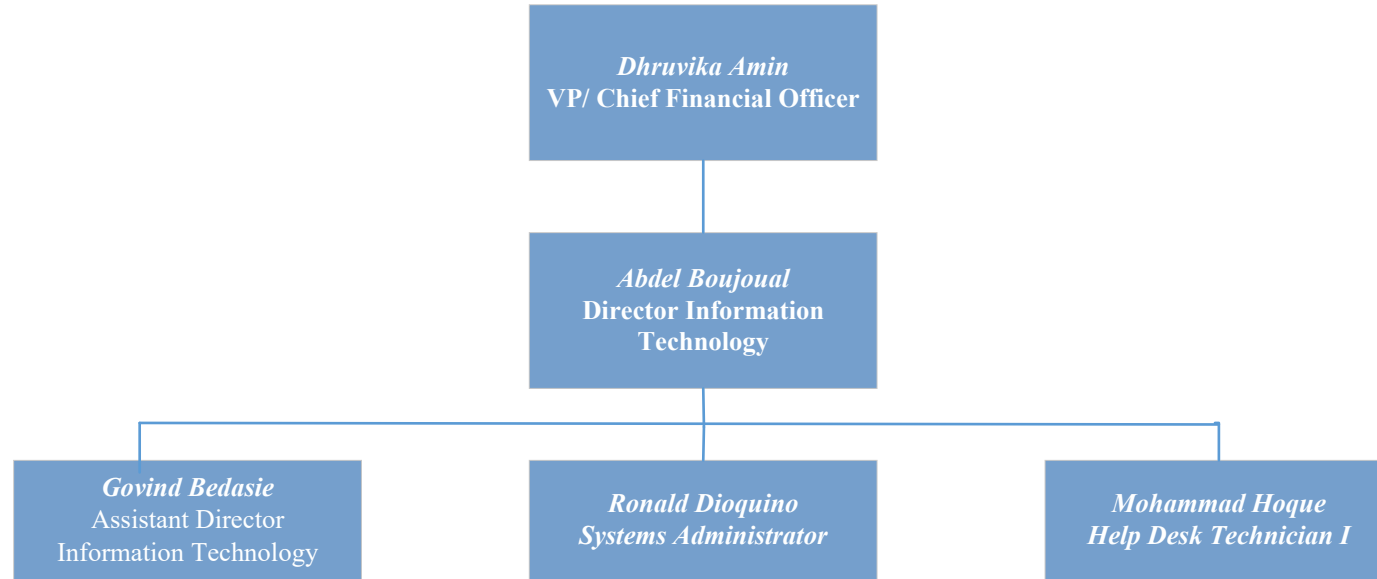


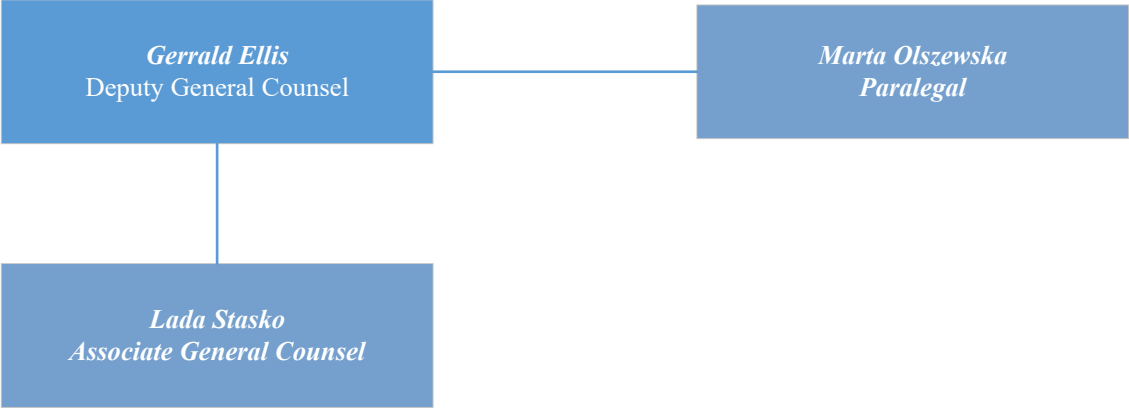
# Horticulture & Grounds (32BJ)

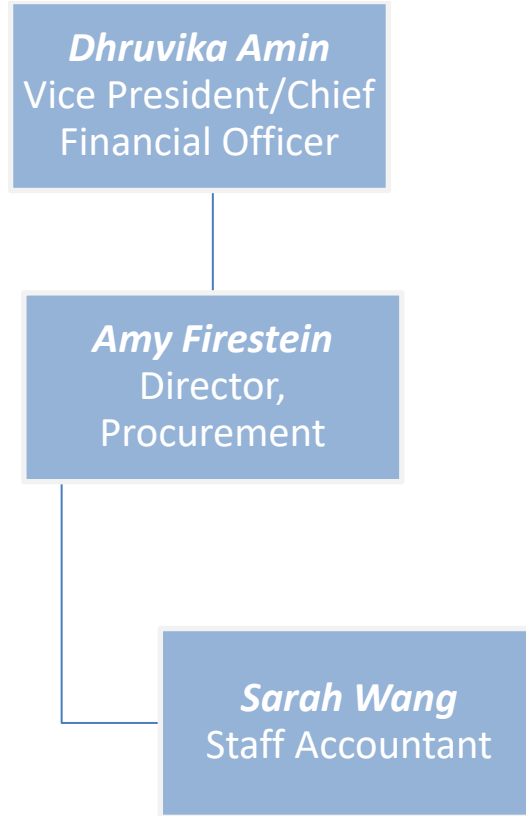






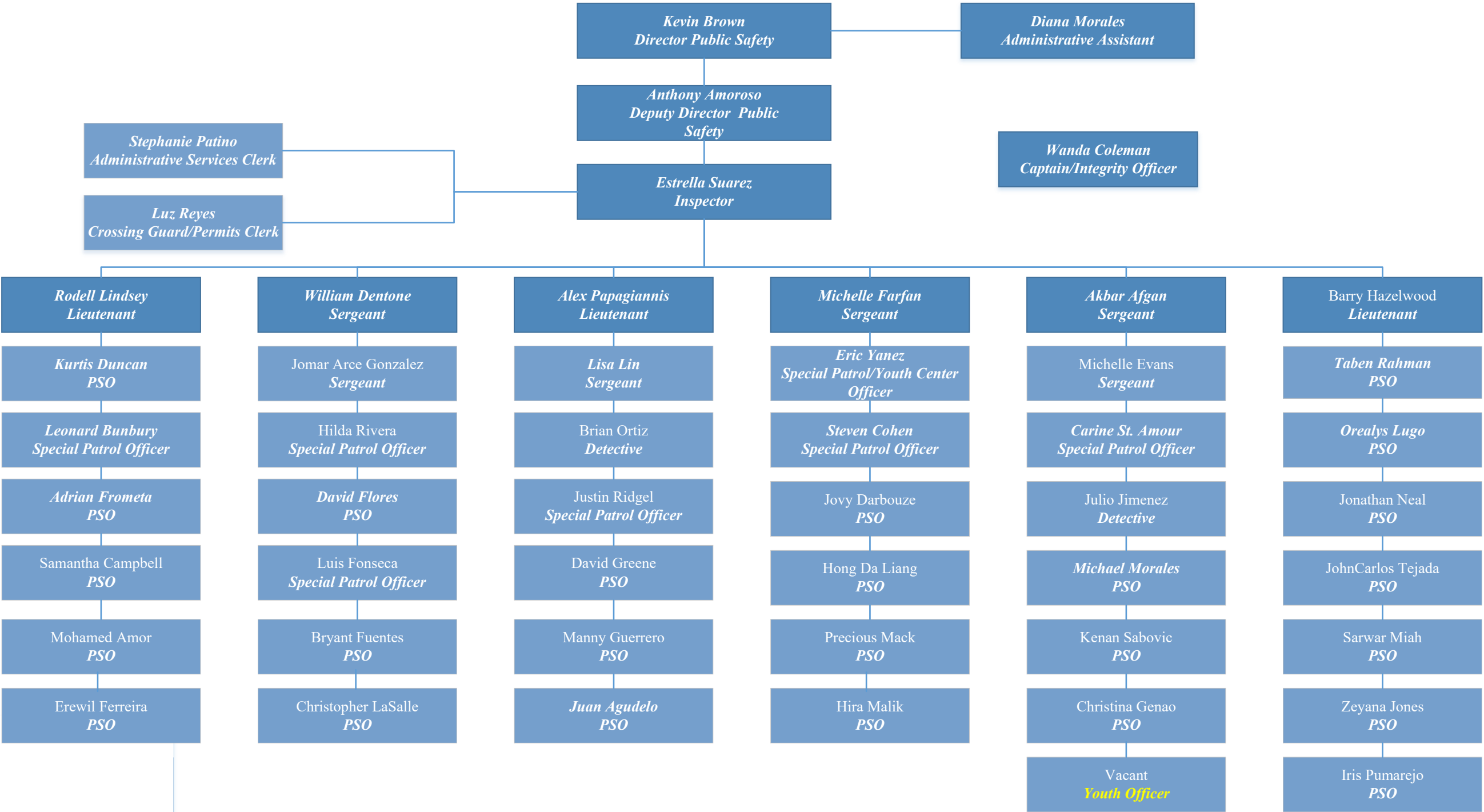


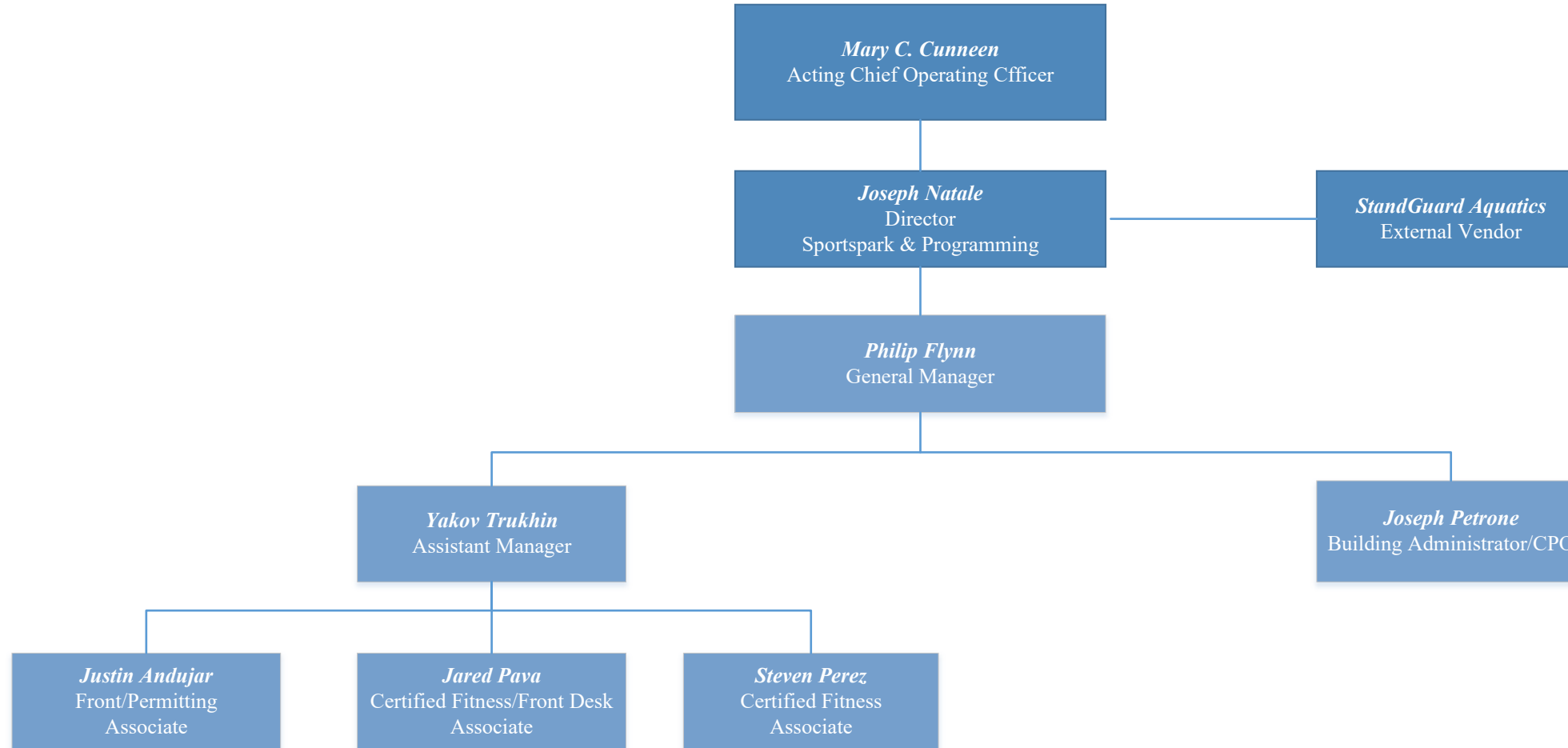






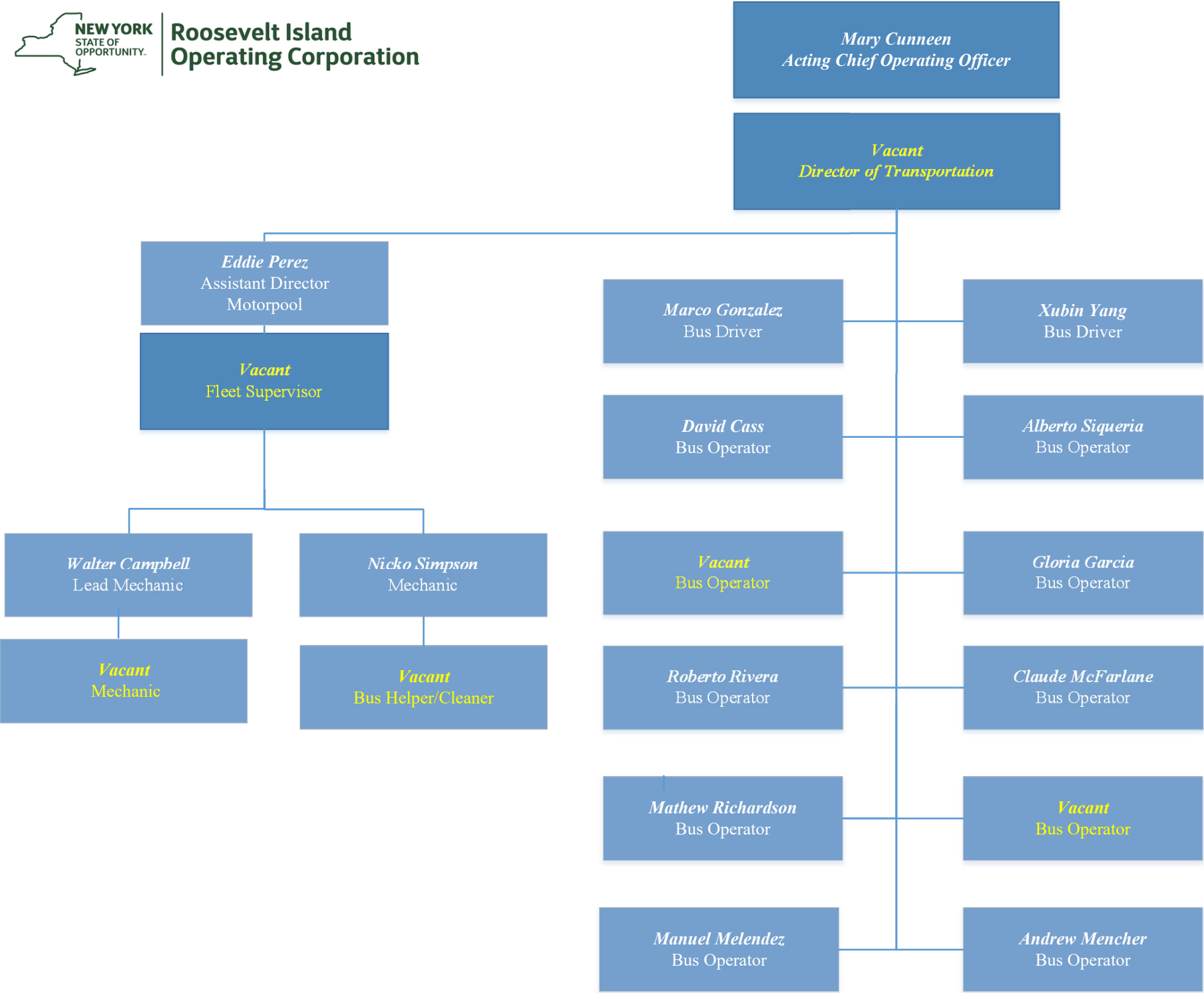
# Public Safety (PSOBA)







# Transportation & Motorpool (Local 210)





# Warehouse Operations

